

Ansal
Plaza

GREATER NOIDA

Shopping as it should be



Shopping as it should be



Shopping as it should be

GREATER NOIDA

- Area: 7.7 lac sqft
- First organized retail platform of Greater Noida
- Surrounded by 150 Educational institutes
- Anchor Tenant: Big Cinema, Reliance Super
- Other Key Retailers: Mc Donalds, Allen Solly, Reebok, Levis, Lee
- Footfall:
 - Weekend 17000
 - Week days 12000

Shopping as it should be

SIZE: 104ft X 24ft



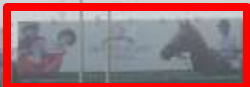
SHIVALIK
HOMES

4 Beds, 3 Bath, 3 Car

www.shivalikhomes.com

The billboard is a large rectangular sign mounted on a building. It features a white background with a blue and green cityscape illustration on the left. The text 'SHIVALIK HOMES' is prominently displayed in the center. Below the main title, there is a smaller line of text: '4 Beds, 3 Bath, 3 Car'. At the bottom, a website URL 'www.shivalikhomes.com' is visible. A small circular logo is present in the top right corner of the billboard.

2012/04/28



Ansal Plaza

Reliance Super



McFlurry
McFries
McDonald's

BIG CINEMAS



SIZE: 20ft X 10ft



i can

ADMISSION OPEN FOR
CRASH COURSE
for
AIEEE / CBSE-AIPMT & AIIMS 2012

Test Series Course
for
IT-JEE / AIEEE & MEDICAL -2012

One Year & Two Years Courses
for
Medical / IT-JEE 2013-2014

Aakash
Medical / IT-EE Foundations
Greater Noida Branch
Ph: 9311091149, 8595179661, 9312230403

CROMĀ
The Electronics Megastore

2012/03/26

Guard Room



APPV-I 8

SIZE: 7ft X 4ft

LOOK UP

Pizza Hut	GF
Freelook	GF - 01
Callinus	GF - 02
Spice Hot Spot	GF - 03
Lakshita International	GF - 04
Cafe Coffee Day	GF - 06
Gaurav Estate	GF - 07
Aditas	GF - 08
Blackberry	GF - 08A
Tau's Lassi Bar	GF - 13
Chaupai Kitchen	GF - 14A
Big Cinema Box Office	GF
Pats	GF - 14B
Tata Croma	GF
Sunaj Business	GF - 17
Nokia	GF - 18
Good Things	GF - 19
Archies	GF - 20
Guardian	GF - 21
Allen Solly	GF - 21
Multi	GF - 23
Reliance Vision Express	GF - 24
Reliance Fresh	GF - 25 & 26
Bakery Shop	GF
Subway	GF - 27
Samung	GF - 28
Vodafone	GF - 30 & 31
	GF - 32

90
↓ 2

**DO NOT USE LIFT
IN CASE OF FIRE**





Shopping as it should be

FOR QUERIES PLZ CONTACT

Mr. Jacob Mathew- jacob@apmmc.co.in, +91-8130083812

Mr. Monik Sharma- monik@apmmc.co.in, +91-9717885510

Shopping as it should be